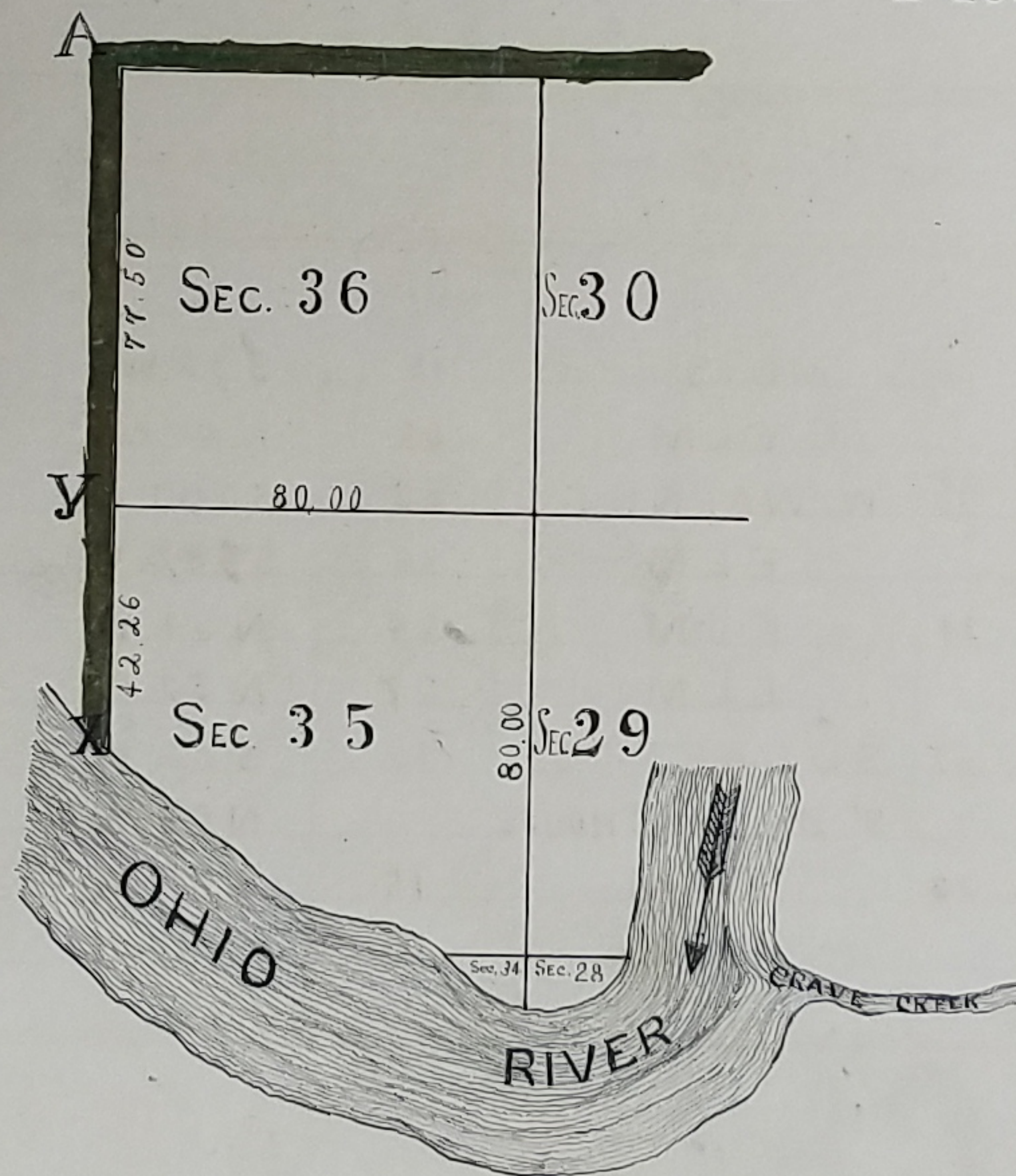


TOWNSHIP No. I RANGE No. II.



DESCRIPTION OF TOWNSHIP No. I RANGE No. II.

POSTS	BEARING TREES	INCHES DIAM.	COURSE THEY BEAR	LINKS DISTANT
A	SPRE. OAK	24	S 37 W	28
	B. WALNUT	30	N 41 W	28
Y	SUGARTREE	12	S 69 1/2 W	21
	BEECH	15	S 63 E	26
X	SUGARTREE	18	N 89 E	25
	SUGARTREE	10	S 74 1/2 W	15

INTERIOR SECTION CORNERS DESCRIBED.

INTERIOR CORNERS	BEARING TREES	INCHES DIAM.	COURSE THEY BEAR	LINKS DISTANT
29 . 30 35 . 36	MULBERRY	10	S 32 W	35
	ELM	09	N 42 E	41
28 . 29 34 . 35	W. WALNUT	20	SOUTH	131
	ELM	36	S 48 1/2 W	247
28 . 34	ELM	24	N 34 W	32
	ELM	27	N 52 E	51
34 . 35	SUGARTREE	12	S 82 W	150
	S' DILLONSHOUSE		N 53 W	85
28 . 29	ELM	15	S 30 W	21
	ELM	15	S 30 E	12

REMARKS.

This FRACTIONAL TOWNSHIP WAS SURVEYED
 by ELANTHAN SCOFIELD IN MARCH 1803 -
 SECTIONS 29, 30, 35 and 36 were sold at New York
 FRACTION No. 28 CONTAINS 1.76 ACRES
 FRACTION No. 34 CONTAINS 1.54 ACRES

EXAMINED AND COMPARED,

TRUE COPY
 FROM THE ORIGINAL
 JOSEPH, WOOD, REG.

A TRUE COPY
 BY
 JOHN A. BOND
 1894