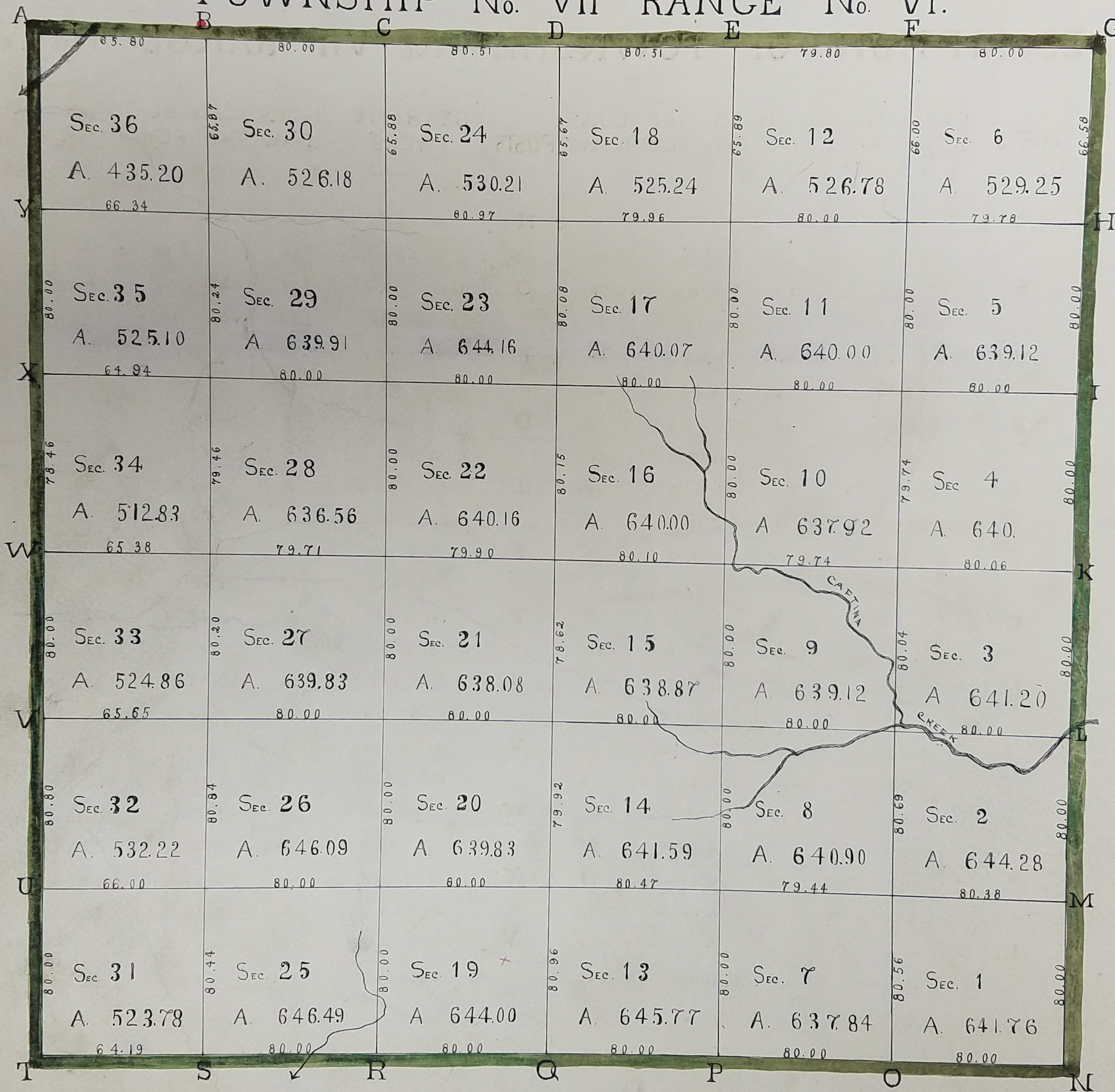


# TOWNSHIP No. VII RANGE No. VI.



TOWNSHIP No. VII RANGE No. VI.

DESCRIPTION OF TOWNSHIP No. VII RANGE No. VI.

POSTS	BEARING TREES	INCHES DIAM.	COURSE THEY BEAR	LINKS DISTANT	POSTS	BEARING TREES	INCHES DIAM.	COURSE THEY BEAR	LINKS DISTANT
A	W. ASH	12	SOUTH	41	N	B. OAK	26	S 22 W	18
	W. WALNUT	14	N 4 W	25		W. OAK	18	N 20 W	25
B	W. OAK	22	N 10 W	06	O	HICKORY	17	S 26 W	16
	W. OAK	22	S 28 E	79		RED OAK	12	N 4 E	03
C	CHEST. OAK	24	S 82 W	33	P	HICKORY	14	N 59 E	35
	CHESTNUT	14	N 22 E	31		RED OAK	30	S 52 W	25
D	W. OAK	12	N 86 E	07	Q	GUM	06	N 88 W	33
	HICKORY	36	N 60 W	17		W. OAK	14	N 76 E	25
E	W. OAK	15	N 65 W	21	R	RED OAK	12	N 84 E	21
	GUM	14	S 18 E	10		RED OAK	16	S 79 W	27
F	W. OAK	22	N 9 W	34	S	POPLAR	10	N 43 E	14
	W. OAK	18	S 37 E	53		MAPLE	07	S 57 W	08
C	W. OAK	18	N 49 E	19	T	W. OAK	12	N 57 W	33
	W. OAK	18	S 55 W	70		B. OAK	24	S 23 E	49
H	W. OAK	13	S 13 W	30	U	RED OAK	20	S 53 E	20
	W. OAK	15	N 13 E	20		CHEST. OAK	12	S 67 W	09
I	W. OAK	22	S 62 W	41	V	HICKORY	15	S 77 E	68
	W. OAK	16	N 44 E	26		HICKORY	20	S 53 W	18
K	SUGARTREE	18	N 2 E	60	W	SUGARTREE	14	N 18 E	39
	SUGARTREE	09	S 19 W	32		SUGARTREE	12	S 18 W	26
L	SUGARTREE	10	S 55 E	47	X	POPLAR	14	N 37 W	22
	CHERRYTREE	14	N 50 W	43		B. OAK	20	S 72 E	52
M	W. OAK	18	N 19 W	39	Y	W. OAK	10	N 34 E	20
	W. OAK	36	S 39 E	20		W. OAK	12	S 10 W	20

TOWNSHIP No. VII RANGE No. VI CONTINUED.  
 QUARTER SECTION POSTS DESCRIBED.

QUARTER POSTS	BEARING TREES	INCHES DIAM.	COURSE THEY BEAR	LINKS DISTANT	QUARTER POSTS	BEARING TREES	INCHES DIAM.	COURSE THEY BEAR	LINKS DISTANT	QUARTER POSTS	BEARING TREES	INCHES DIAM.	COURSE THEY BEAR	LINKS DISTANT
1. 2	W. OAK	18	S 71 W	21	13. 14	B. OAK	30	S 15 W	12	25. 26	CHESTNUT	10	N 1 W	43
	W. OAK	58	N 68 E	38		B. OAK	30	N 67 E	32		POPLAR	24	S 60 E	21
1. 7	THORN	06	S 87 E	21	13. 19	W. OAK	14	S 45 E	10	25. 31	MAPLE	18	N 2 E	08
	POPLAR	08	N 89 W	23		W. OAK	16	S 42 W	18		BEECH	08	S 51 W	38
2. 8	W. WALNUT	06	S 77 E	26	14. 20	CHESTNUT	08	N 19 W	13	26. 32	W. OAK	24	S 6 E	23
	W. WALNUT	08	S 53 E	25		DOGWOOD	06	S 23 W	17		W. OAK	24	N 34 E	30
7. 8	W. OAK	10	S 61 W	33	19. 20	B. OAK	20	N 71 E	26	31. 32	B. OAK	20	N 45 W	24
	HICKORY	10	S 75 E	23		B. OAK	22	S 28 W	52		W. OAK	20	N 68 E	39
3. 4	W. OAK	20	N 70 W	16	15. 16	GRABAPPLE	12	S 18 E	14	27. 28	POPLAR	10	S 7 W	26
	DOGWOOD	06	N 82 E	15		W. OAK	08	N 15 E	40		B. OAK	40	N 37 E	33
3. 9	SUGARTREE	08	S 58 W	12	15. 21	W. OAK	14	N 50 W	09	27. 33	MAPLE	14	N 15 E	16
	W. OAK	12	S 40 E	19		W. OAK	18	S 3 1/2 E	25		BEECH	14	S 5 E	30
4. 10	W. OAK	14	N 71 W	22	16. 22	W. OAK	20	S 29 E	09	28. 34	W. OAK	20	N 69 W	07
	W. OAK	08	N 24 E	13		W. OAK	14	N 50 E	39		W. OAK	16	N 42 E	19
9. 10	W. OAK	10	N 55 E	05	21. 22	W. OAK	20	N 13 E	45	33. 34	W. OAK	14	S 9 W	19
	B. OAK	30	S 30 W	27		B. OAK	20	S 25 E	39		BEECH	08	N 53 W	11
5. 6	MAPLE	10	S 7 E	44	17. 18	HICKORY	10	N 64 E	14	29. 30	IRONWOOD	11	N 77 W	33
	W. OAK	08	N 33 E	15		W. OAK	12	S 17 W	17		BEECH	10	S 49 E	40
5. 11	W. OAK	10	S 52 W	18	17. 23	W. OAK	18	S 24 W	25	29. 35	HICKORY	15	S 17 E	11
	HICKORY	08	N 49 E	20		W. OAK	18	S 49 E	24		W. OAK	09	N 5 W	27
6. 12	W. OAK	12	N 79 W	47	18. 24	W. OAK	30	S 23 W	06	30. 36	HICKORY	14	N 24 W	35
	W. OAK	20	S 75 E	18		BEECH	08	N 88 E	16		HICKORY	12	S 8 E	12
11. 12	W. OAK	10	N 25 E	19	23. 24	W. OAK	18	N 33 E	09	35. 36	BEECH	08	S 71 E	32
	B. OAK	20	S 55 W	12		W. OAK	10	S 60 W	13		MAPLE	08	S 37 W	23

# TOWNSHIP No. VII RANGE No. VI CONTINUED

## INTERIOR SECTION CORNERS DESCRIBED.

SECTION CORNERS	BEARING TREES	INCHES DIAM.	COURSE THEY BEAR	LINKS DISTANT	SECTION CORNERS	BEARING TREES	INCHES DIAM.	COURSE THEY BEAR	LINKS DISTANT
1 7 . 2 8	W. OAK	18	S 15 W	16	14 . 15 20 . 21	W. OAK	08	S 39 E	39
	W. OAK	14	N 5 W	18		RED OAK	20	N 42 W	24
3 9 . 4 10	HICKORY	10	S 49 W	11	20 . 21 26 . 27	W. OAK	16	S 29 W	39
	HICKORY	14	N 84 E	16		BEECH	06	N 41 E	06
5 11 . 6 12	W. OAK	14	S 12 W	18	26 . 27 32 . 33	POPLAR	22	S 61 W	20
	W. OAK	22	N 67 E	25		BEECH	08	N 37 E	15
13 . 14 19 . 20	W. OAK	18	N 5 E	46	21 . 22 27 . 28	POPLAR	15	N 42 W	12
	B. OAK	18	S 23 W	19		CHESTNUT	12	S 42 E	20
15 . 16 21 . 22	B. OAK	20	N 60 E	20	9 . 10 15 . 16	PIN OAK	20	S 8 E	52
	W. OAK	14	N 83 W	20		CHERRY	15	N 59 W	67
17 . 18 23 . 24	CHESTNUT	36	N 53 E	20	4 . 5 10 . 11	W. OAK	10	N 12 E	31
	B. OAK	06	S 61 W	20		DO	12	S 27 W	19
25 . 26 31 . 32	BEECH	10	N 47 E	12	10 . 11 16 . 17	W. OAK	16	N 71 W	15
	POPLAR	38	N 30 W	22		DO	15	S 49 E	27
27 . 28 33 . 34	SUGARTREE	30	S 46 E	24	16 . 17 22 . 23	W. OAK	14	S 77 W	36
	SUGARTREE	20	N 86 E	08		DO	15	N 61 E	34
29 . 30 35 . 36	W. OAK	14	N 22 W	27	22 . 23 28 . 29	W. OAK	14	N 13 E	16
	W. OAK	30	S 33 E	16		DO	21	S 2 E	36
7 . 8 13 . 14	W. OAK	12	N 37 E	20	28 . 29 34 . 35	CHESTNUT	40	N 26 E	23
	DO	10	S 52 W	27		DO	36	S 48 W	34
19 . 20 25 . 26	W. OAK	17	S 3 W	44	23 . 24 29 . 30	BEECH	12	S 84 W	09
	B. OAK	14	N 3 W	52		W. OAK	24	S 57 E	23
2 . 3 8 . 9	SUGARTREE	10	N 82 W	52	11 . 12 17 . 18	W. OAK	12	N 43 W	26
	W. OAK	18	S 13 E	27		DO	10	S 9 E	27
8 . 9 14 . 15	W. OAK	14	S 19 W	03					
	RED OAK	16	N 3 E	44					

(EXAMINED & COMPARED)

TRUE COPY  
FROM THE ORIGINAL  
JOSEPH WOOD REG.

A TRUE COPY  
BY  
JOHN A. BOND  
1894