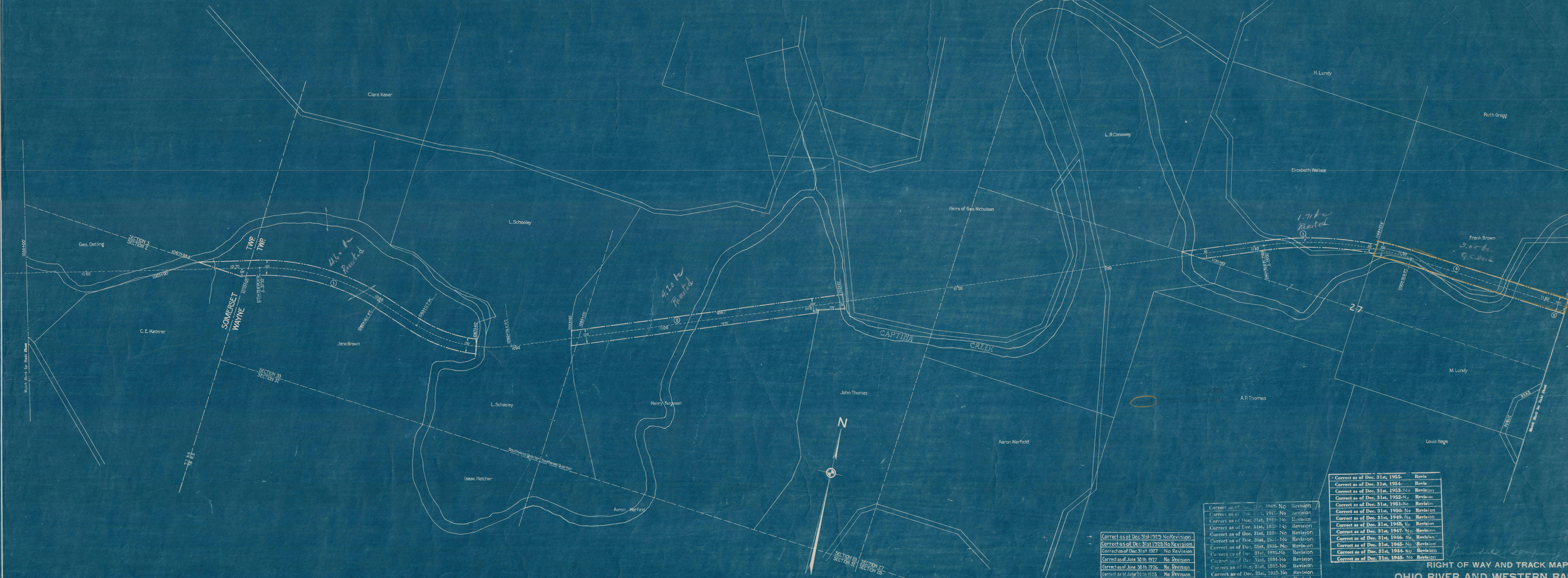


BELMONT COUNTY, OHIO



Correct as of Dec. 31st 1923	No Revision
Correct as of Dec. 31st 1923	No Revision
Correct as of Dec. 31st 1927	No Revision
Correct as of June 30th 1927	No Revision
Correct as of June 30th 1926	No Revision
Correct as of June 30th 1925	No Revision
Correct as of June 30th 1924	No Revision
Correct as of June 30th 1923	No Revision
Correct as of June 30th 1922	No Revision
Correct as of June 30th 1921	No Revision
Correct as of June 30th 1920	No Revision
Correct as of June 30th 1919	No Revision
Correct as of June 30th 1918	No Revision

Correct as of Dec. 31st 1917	No Revision
Correct as of Dec. 31st 1916	No Revision
Correct as of Dec. 31st 1915	No Revision
Correct as of Dec. 31st 1914	No Revision
Correct as of Dec. 31st 1913	No Revision
Correct as of Dec. 31st 1912	No Revision
Correct as of Dec. 31st 1911	No Revision
Correct as of Dec. 31st 1910	No Revision
Correct as of Dec. 31st 1909	No Revision
Correct as of Dec. 31st 1908	No Revision
Correct as of Dec. 31st 1907	No Revision
Correct as of Dec. 31st 1906	No Revision
Correct as of Dec. 31st 1905	No Revision
Correct as of Dec. 31st 1904	No Revision
Correct as of Dec. 31st 1903	No Revision
Correct as of Dec. 31st 1902	No Revision
Correct as of Dec. 31st 1901	No Revision
Correct as of Dec. 31st 1900	No Revision

Correct as of Dec. 31st 1965	Revised
Correct as of Dec. 31st 1964	No Revision
Correct as of Dec. 31st 1963	No Revision
Correct as of Dec. 31st 1962	No Revision
Correct as of Dec. 31st 1961	No Revision
Correct as of Dec. 31st 1960	No Revision
Correct as of Dec. 31st 1959	No Revision
Correct as of Dec. 31st 1958	No Revision
Correct as of Dec. 31st 1957	No Revision
Correct as of Dec. 31st 1956	No Revision
Correct as of Dec. 31st 1955	No Revision
Correct as of Dec. 31st 1954	No Revision
Correct as of Dec. 31st 1953	No Revision
Correct as of Dec. 31st 1952	No Revision
Correct as of Dec. 31st 1951	No Revision
Correct as of Dec. 31st 1950	No Revision
Correct as of Dec. 31st 1949	No Revision
Correct as of Dec. 31st 1948	No Revision
Correct as of Dec. 31st 1947	No Revision
Correct as of Dec. 31st 1946	No Revision
Correct as of Dec. 31st 1945	No Revision
Correct as of Dec. 31st 1944	No Revision
Correct as of Dec. 31st 1943	No Revision

Sheet No. 11 of Belmont County, Ohio, of the Ohio River and Western Railway, from survey station 1056+00, to survey station 1161+60.
 Chief Draftsman

RIGHT OF WAY AND TRACK MAP
 OHIO RIVER AND WESTERN RAILWAY

STATION 1056+00 TO STATION 1161+60

SCALE - 1 INCH = 200 FEET JUNE 30, 1917

OFFICE OF VALUATION ENGINEER

PITTSBURGH, PA.

Purchased by The R. & C. S. April 15, 1931. Finance Docket No. 8416.
 Date: Mar. 7, 1931. No. 1116, 30-1173.