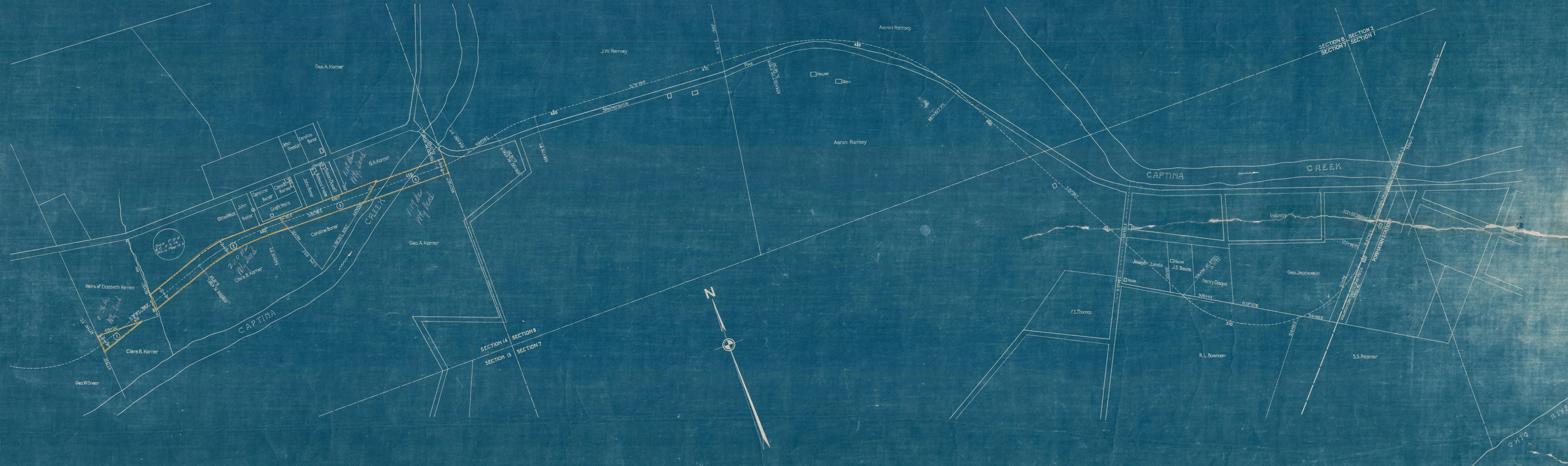


BELMONT COUNTY, OHIO
 YORK TOWNSHIP
 T. 4 N., R. 3 W.



Correct as of Dec. 31st, 1955: No Revision	Correct as of Dec. 31st, 1947: No Revision	Correct as of Dec. 31st, 1929: No Revision
Correct as of Dec. 31st, 1954: No Revision	Correct as of Dec. 31st, 1946: No Revision	Correct as of Dec. 31st, 1928: No Revision
Correct as of Dec. 31st, 1953: No Revision	Correct as of Dec. 31st, 1945: No Revision	Correct as of Dec. 31st, 1927: No Revision
Correct as of Dec. 31st, 1952: No Revision	Correct as of Dec. 31st, 1944: No Revision	Correct as of June 30th, 1926: No Revision
Correct as of Dec. 31st, 1951: No Revision	Correct as of Dec. 31st, 1943: No Revision	Correct as of June 30th, 1925: No Revision
Correct as of Dec. 31st, 1950: No Revision	Correct as of Dec. 31st, 1942: No Revision	Correct as of June 30th, 1924: No Revision
Correct as of Dec. 31st, 1949: No Revision	Correct as of Dec. 31st, 1941: No Revision	Correct as of June 30th, 1923: No Revision
Correct as of Dec. 31st, 1948: No Revision	Correct as of Dec. 31st, 1940: No Revision	Correct as of June 30th, 1922: No Revision
Correct as of Dec. 31st, 1947: No Revision	Correct as of Dec. 31st, 1939: No Revision	Correct as of June 30th, 1921: No Revision
Correct as of Dec. 31st, 1946: No Revision	Correct as of Dec. 31st, 1938: No Revision	Correct as of June 30th, 1920: No Revision
Correct as of Dec. 31st, 1945: No Revision	Correct as of Dec. 31st, 1937: No Revision	Correct as of June 30th, 1919: No Revision
Correct as of Dec. 31st, 1944: No Revision	Correct as of Dec. 31st, 1936: No Revision	Correct as of June 30th, 1918: No Revision
Correct as of Dec. 31st, 1943: No Revision	Correct as of Dec. 31st, 1935: No Revision	
	Correct as of Dec. 31st, 1934: No Revision	
	Correct as of Dec. 31st, 1933: No Revision	
	Correct as of Dec. 31st, 1932: No Revision	
	Correct as of Dec. 31st, 1931: No Revision	
	Correct as of Dec. 31st, 1930: No Revision	

Sheet No. 21 V.1b Ohio of Ohio River and Western Railway
 from survey station 427+32 to survey station 522+40
 Chief Engineer

Pennell Company
RIGHT OF WAY AND TRACK MAP
OHIO RIVER AND WESTERN RAILWAY
 STATION 427+32 TO STATION 522+40
 SCALE: 1 INCH = 200 FEET JUNE 30, 1917
 OFFICE OF VALUATION ENGINEER
 PITTSBURGH, PA.
 Purchased by THE R.O.W. & C.R. April 19, 1911. Finance Document No. 848.
 dated May 2, 1911. P.T. 35-1110-21-3173

V.24
 OHIO
 3.59
 V.12
 OHIO
 3.59
 V.1
 OHIO
 27