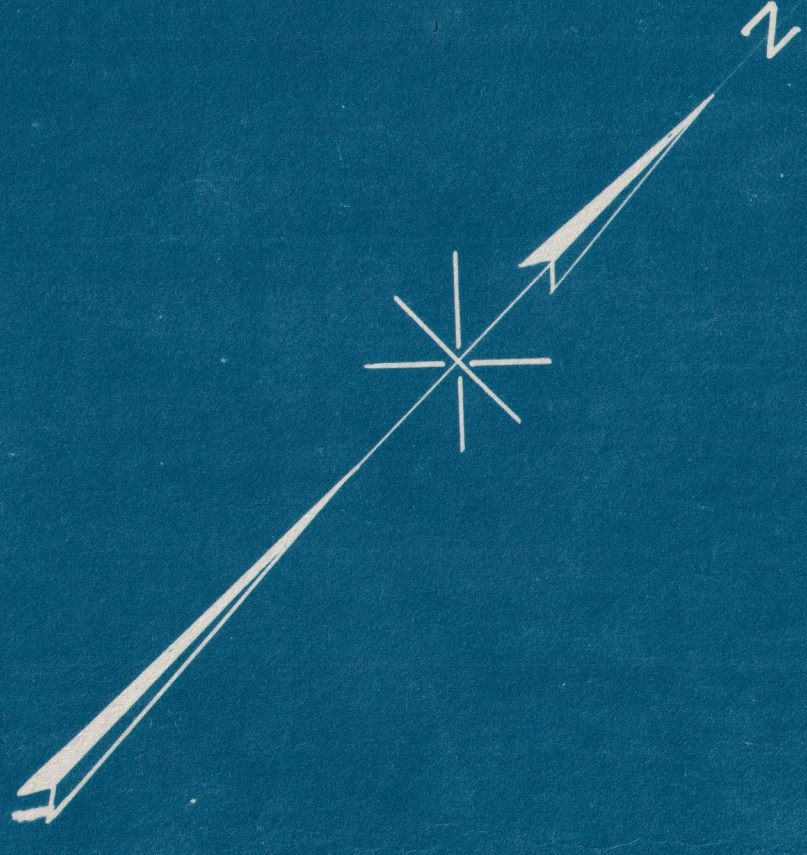
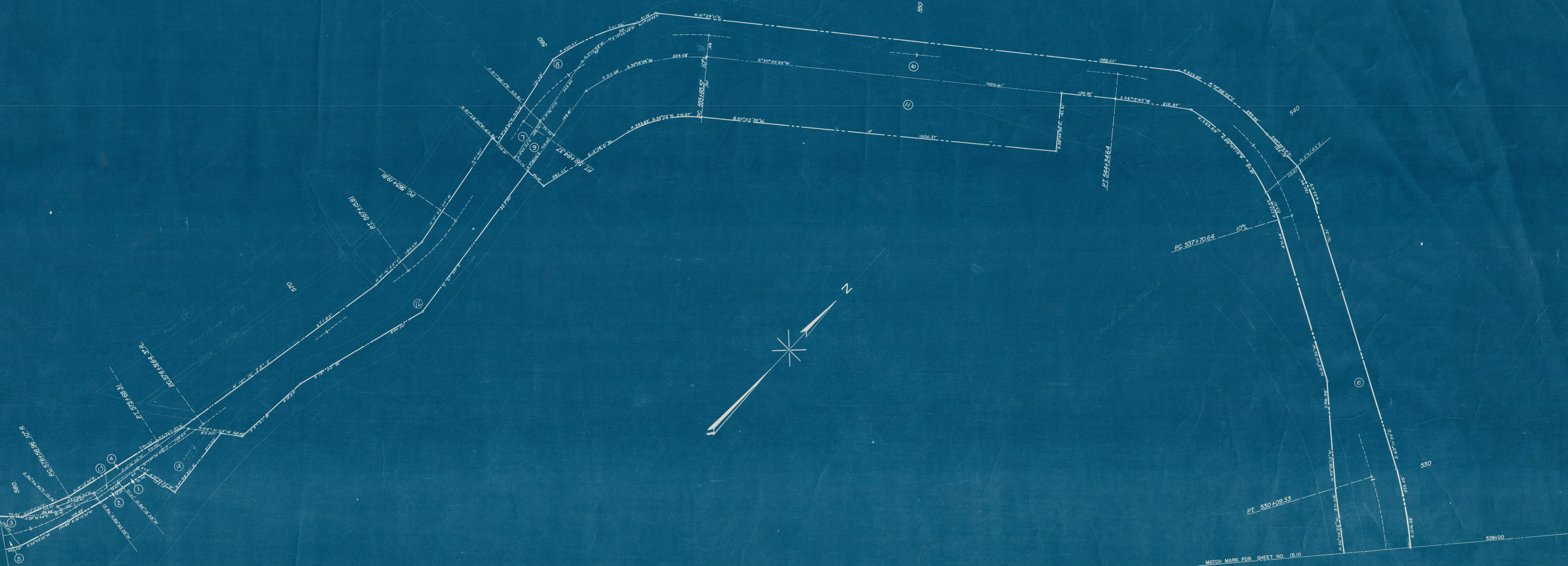


BELMONT COUNTY, OHIO  
WASHINGTON TWP.

MATCH MARK FOR SHEET NO. 15.12



MATCH MARK FOR SHEET NO. 15.10

Correct as of Dec. 31st, 1955.	Revis. 9
Correct as of Dec. 31st, 1954.	No. Revision
Correct as of Dec. 31st, 1953.	No. Revision
Correct as of Dec. 31st, 1952.	Map Revision
Correct as of Dec. 31st, 1951.	No. Revision
Correct as of Dec. 31st, 1950.	Map Revision
Correct as of Dec. 31st, 1949.	Map Revision
Correct as of Dec. 31st, 1948.	Map Revision
Correct as of Dec. 31st, 1947.	Map Revision
Correct as of Dec. 31st, 1946.	Revis.
Correct as of Dec. 31st, 1945.	Revis.
Correct as of Dec. 31st, 1944.	Revis.
Correct as of Dec. 31st, 1943.	Revis.

*Pendel Company*  
RIGHT OF WAY AND TRACK MAP  
**PITTSBURGH, OHIO VALLEY AND CINCINNATI R.R.**  
STATION 528+00 TO STATION 560+80  
SCALE 1" = 100'      JUNE 30, 1918  
OFFICE OF VALUATION ENGINEER  
PHILADELPHIA, PA.

V. 24  
D. 110

15.11

V.S.P.