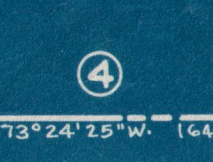
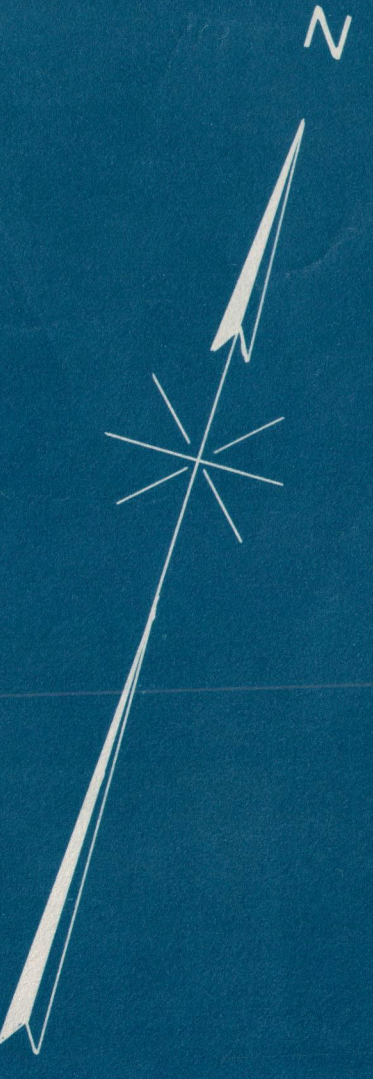


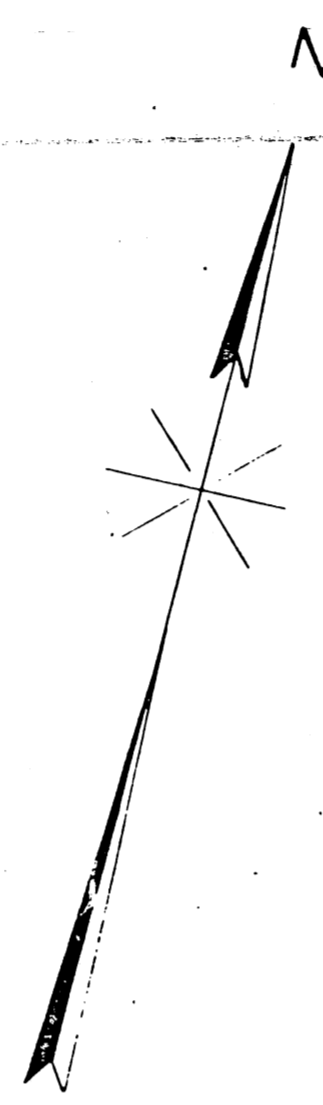
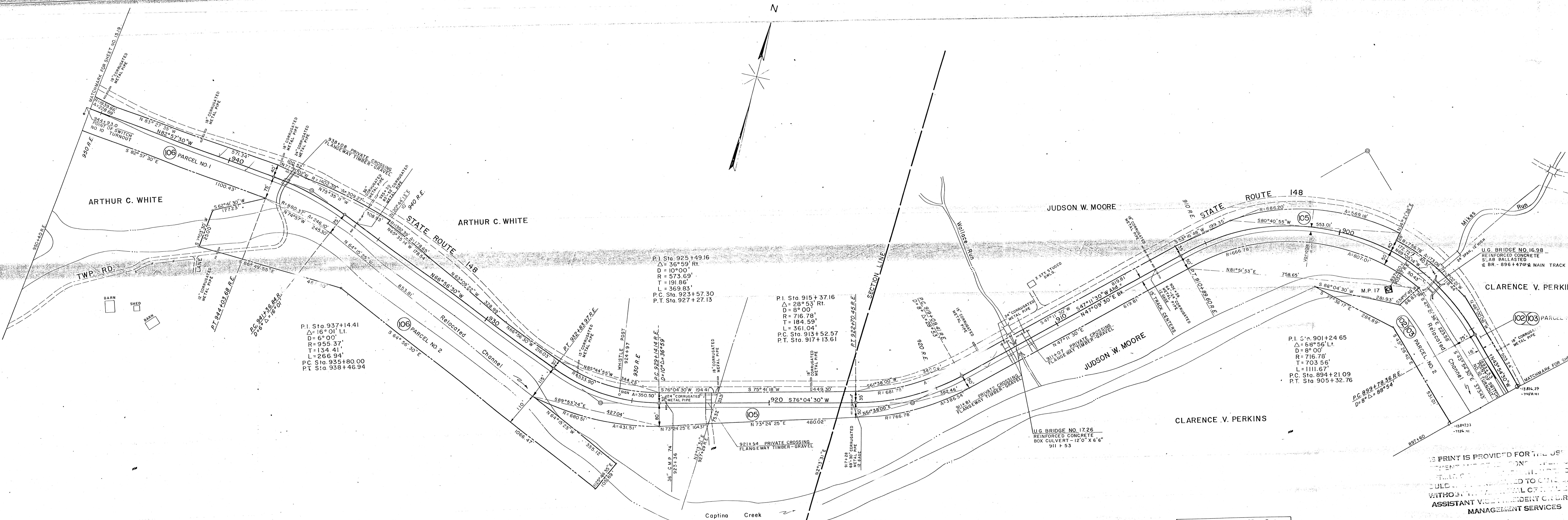
MATCH MARK FOR SHEET NO. 18



BELMONT COUNTY, OHIO
WAYNE TWP.

PITTSBURGH

1970 Parsons 1954



SCHEDULE OF PROPERTY

PARCEL NO.	GRANTOR	GRANTEE	KIND OF INSTRUMENT	DATE OF INSTRUMENT	RECORDED BOOK PAGE	DATE	ACRES	DESCRIPTION
102-103	CLARENCE V. PERKINS et ux	PENDEL COMPANY	Deed				9.670 Ac ±	PARCEL NO. 2 EASEMENT FOR CHANNEL RELOCATION
105	JUDSON W. MOORE et ux	PENDEL COMPANY	Deed				5.248 Ac ±	
106	ARTHUR C. WHITE et ux	PENDEL COMPANY	Deed				13.316 Ac ±	PARCEL NO. 2 EASEMENT FOR CHANNEL RELOCATION

NO.	DATE	REVISION
1	Dec 31, 1955	Revised
2	Dec 31, 1954	Revised
3	Dec 31, 1953	Revised
4	Dec 31, 1952	Revised
5	Dec 31, 1951	Revised
6	Dec 31, 1950	Revised
7	Dec 31, 1949	Revised
8	Dec 31, 1948	Revised
9	Dec 31, 1947	Revised
10	Dec 31, 1946	Revised
11	Dec 31, 1945	Revised
12	Dec 31, 1944	Revised
13	Dec 31, 1943	Revised

LEGEND

- R.E. - Real Estate Center Line
- Rev. R.E. - Revised Real Estate Center Line
- Const. - Construction Center Line

THIS PRINT IS PROVIDED FOR THE USE OF YOU...
 WITHOUT THE LIABILITY OF THE STATE'S ASSISTANT VICE PRESIDENT AND DIRECTOR,
 MANAGEMENT SERVICES

PENDEL COMPANY
 RIGHT OF WAY AND TRACK MAP
 CENTRAL REGION-PITTSBURGH DIVISION
 CAPTINA BRANCH
 STATION 897+60 TO STATION 950+40 RE
 SCALE 1" = 100'