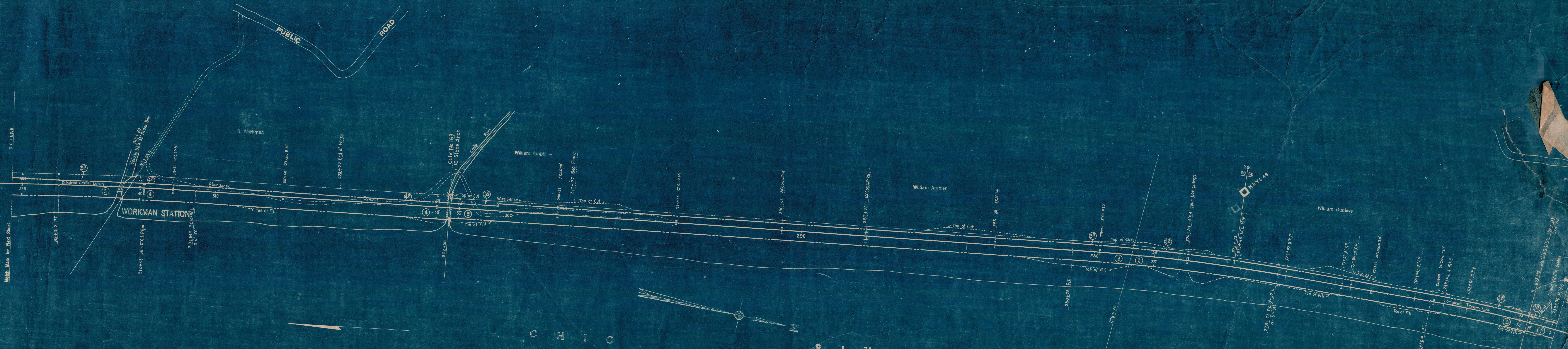


BELMONT COUNTY, OHIO  
MEAD TOWNSHIP



Correct as of Dec. 31st, 1955- No Revision	Correct as of Dec. 31st, 1942- No Revision	Correct as of Dec. 31st, 1929- No Revision
Correct as of Dec. 31st, 1954- No Revision	Correct as of Dec. 31st, 1941- No Revision	Correct as of Dec. 31st, 1928- Map Revised
Correct as of Dec. 31st, 1953- No Revision	Correct as of Dec. 31st, 1940- No Revision	Correct as of Dec. 31st, 1927- No Revision
Correct as of Dec. 31st, 1952- No Revision	Correct as of Dec. 31st, 1939- No Revision	Correct as of June 30th 1926- No Revision
Correct as of Dec. 31st, 1951- No Revision	Correct as of Dec. 31st, 1938- No Revision	Correct as of June 30th 1925- No Revision
Correct as of Dec. 31st, 1950- No Revision	Correct as of Dec. 31st, 1937- No Revision	Correct as of June 30th 1924- No Revision
Correct as of Dec. 31st, 1949- No Revision	Correct as of Dec. 31st, 1936- No Revision	Correct as of June 30th 1923- No Revision
Correct as of Dec. 31st, 1948- No Revision	Correct as of Dec. 31st, 1935- No Revision	Correct as of June 30th 1922- No Revision
Correct as of Dec. 31st, 1947- No Revision	Correct as of Dec. 31st, 1934- No Revision	Correct as of June 30th 1921- No Revision
Correct as of Dec. 31st, 1946- No Revision	Correct as of Dec. 31st, 1933- No Revision	Correct as of June 30th 1920- No Revision
Correct as of Dec. 31st, 1945- No Revision	Correct as of Dec. 31st, 1932- No Revision	Correct as of June 30th 1919- No Revision
Correct as of Dec. 31st, 1944- No Revision	Correct as of Dec. 31st, 1931- No Revision	Correct as of June 30th 1918- No Revision
Correct as of Dec. 31st, 1943- Map Revised	Correct as of Dec. 31st, 1930- No Revision	Correct as of June 30th 1917- No Revision

Sheet No. 6 of V.12 Ohio of Pittsburgh, Ohio Valley and Cincinnati R. R.  
From survey station 204+37.4 to survey station 316+89.6

Chief Draftsman

*Paula Coping*  
RIGHT OF WAY AND TRACK MAP  
PITTSBURGH, OHIO VALLEY AND CINCINNATI R. R.  
OPERATED BY THE  
**PENNSYLVANIA COMPANY**  
CLEVELAND & PITTSBURGH DIVISION  
STATION 264 + 17.4 TO STATION 316 + 89.6  
SCALE: 1 IN. = 100 FT. JUNE 30, 1916  
OFFICE OF VALUATION ENGINEER  
PITTSBURGH, PA.

V.24  
OHIO  
6  
V.12  
OHIO  
6